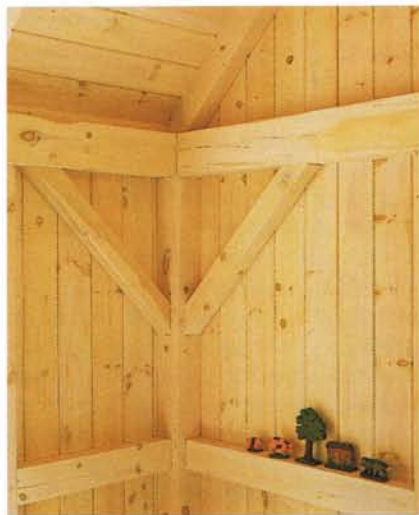




# A CERTAIN OPENNESS

French doors, an array of windows and a wash of white stain give this precut post-and-beam home an appealing airiness.

by ALASTAIR GORDON



*The 10-foot-wide dormer (top) over the entry was added to the stock plan. The upstairs study (left) sits over openings to the entry and the kitchen. A corner post (above), helped by twin knee braces, holds up intersecting beams.*

the package's high-quality components, design flexibility and energy efficiency.

With the choice made, the clients hired Southampton-based designer Richard Lear. Lear, who had modified many Timberpeg house kits, showed them several Long Island houses he had designed; this gave his clients an idea of the different roofs and windows they could select. After these basic design decisions were made, Lear further developed his design around the bare bones of a 20-foot-wide Timberpeg barn kit.

Aware that the vacation home of their dreams would not spring complete from the Timberpeg kit alone, the owners and Lear embellished the package with additional features: A back-to-back brick fireplace (approximately \$8,000) was used to separate the dining area from the 16-square-foot

A PRECUT WOODLAND RETREAT needn't be dark and staid, as the owners of this vacation home well know. Built off a long, unpaved road that runs through the heart of East Hampton's northwest woods, the cottage stands on one of the last expanses of forest left on Long Island. It's a surprising location in a resort area known primarily for its ocean

beaches and potato fields.

The owners were drawn immediately to post-and-beam home kits. "We wanted a small, traditional-looking vacation home," said the owner, "and we liked the rugged look of exposed beams." After researching various companies, the clients settled on a Timberpeg kit. They were attracted by

living room; a 10-foot-wide shed dormer (approximately \$11,000) was added to the roof to highlight the main entrance below and provide space for a whirlpool tub in the upstairs bathroom; French doors (approximately \$600 a set) open up the two-story dining area to southern light and give access to a brick patio (approximately \$2,000); half-round windows at either end of the house were custom-made to match perfectly with the double-hung windows that came with the kit.

The posts, beams, shingles, clapboard and insulating material arrived on two 42-foot-long flatbed trucks from Claremont, New Hampshire, where the lumber is milled in the Timberpeg factory. Over 200 timber parts are marked to aid the builder in the assembly process. Letters and numbers on the timber correspond to letters and numbers on the set of blueprints the company supplies.

Bob Barmore, a builder who had once been a regional sales representative for Timberpeg, supervised the construction of the house. The project took less than six months to complete.

Both the designer and the owners wanted the house to harmonize with the natural, wooded setting of the two-acre site. Clear cedar clapboard, handsplit cedar shakes and a brick chimney evoke a rustic woodland cottage, while the steep 90-degree pitch of the roof echoes the shapes of tall white pines surrounding the property.

In the same spirit, landscaping, by

landscape designer David Seeler, was created to blend in with the surrounding forest. Small holly trees, a birch tree, some indigenous bushes and a wildflower garden were planted in keeping with the sylvan setting. A low-maintenance groundcover of bark chips was laid in place of a front lawn, and a classic white picket fence was used to enclose the backyard.

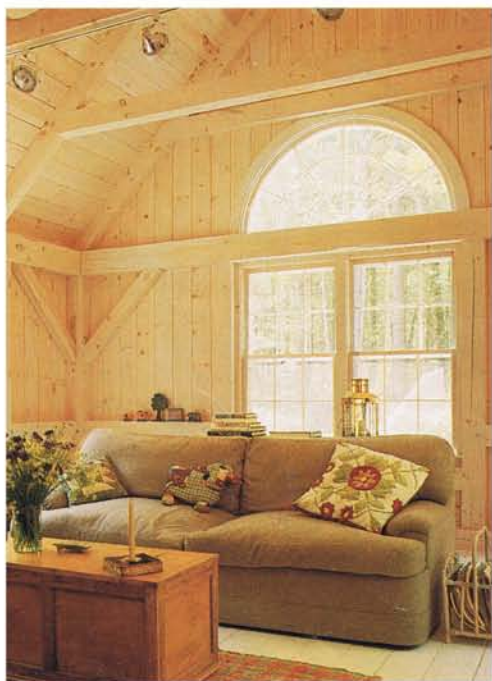
The country looks of the house's exterior were carried over into the inter-

rior spaces where the post-and-beam framing is exposed. The solid timber, ranging from 4x4s to hefty 8x12s, is joined together by real mortise and tenon joints that are pinned together with oak pegs the size of fat cigars.

Complementing the airiness of the home's interior, the rooms project a simple, well-scrubbed brightness. Pine framing was pickled with a white stain, and the 1"x6" pine floorboards were painted with a white epoxy deck paint.

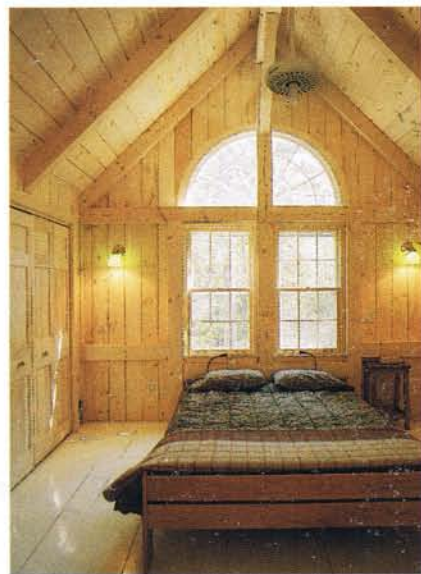


*The living room's Palladian windows (left) were added to bring daylight into the upper reaches of the cathedral ceiling. Track lighting mounted on the collar beam takes care of area lighting at night. A plank-floored area opposite the kitchen (above) is used for dining. French doors, which can be opened onto the deck, provide light, while the double-facing fireplace supplies warmth.*





*Clever additions to this post-and-beam package include a double fireplace, brick patio and shed dormer above entry.*



The pickling idea, which designer Lear had used in several of his other post-and-beam projects, "gave the house more of a modern feel," said the client. Consistent with the pale tones of the wood, buff-colored 12-square-inch ceramic tiles were laid in the entry and kitchen floors.

The custom touches and quality fin-

ish work brought the project's cost in at close to \$120 per square foot, but greatly added to the home's charm. The personal elements reflected in the carefully chosen options make this vacation home well worth retreating to.

FOR FURTHER INFORMATION, SEE BUYING GUIDE ON PAGE 108.

*The living-room side of the fireplace (left) offers a cozy niche with views across the 1,790-square-foot house. The U-shaped kitchen (top) is self-contained. Upstairs bedroom (above) provides ample storage with large wall closets. Roof dormer (opposite, top) gives the upstairs bath extra room. Offset twin gables (right) in the living room and main house allow more windows and offer a striking view.*

