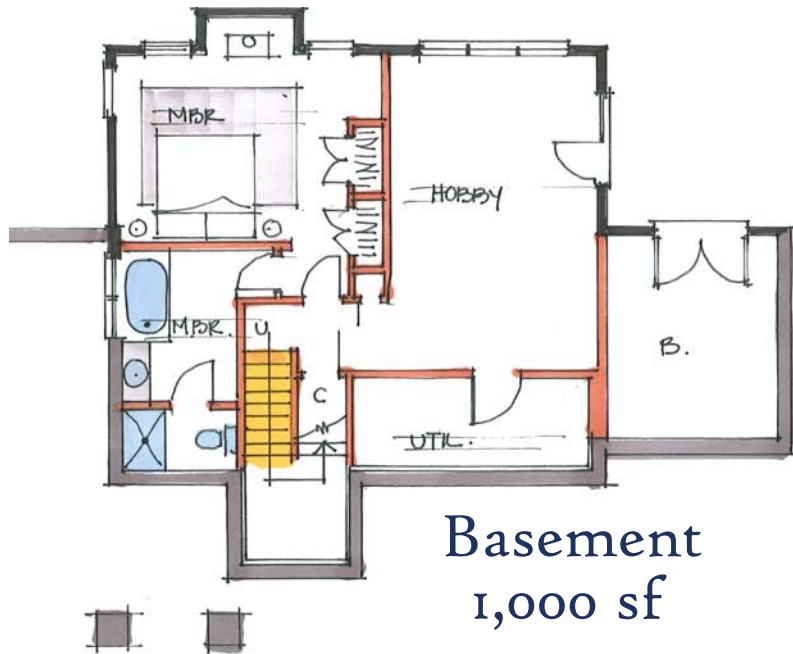


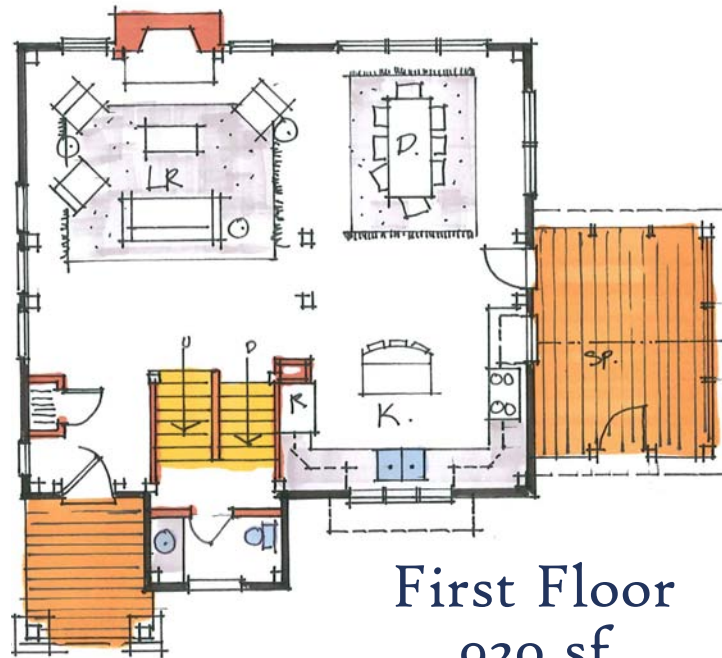
# The Stoney Creek

Click to Request  
More Info About  
This Plan

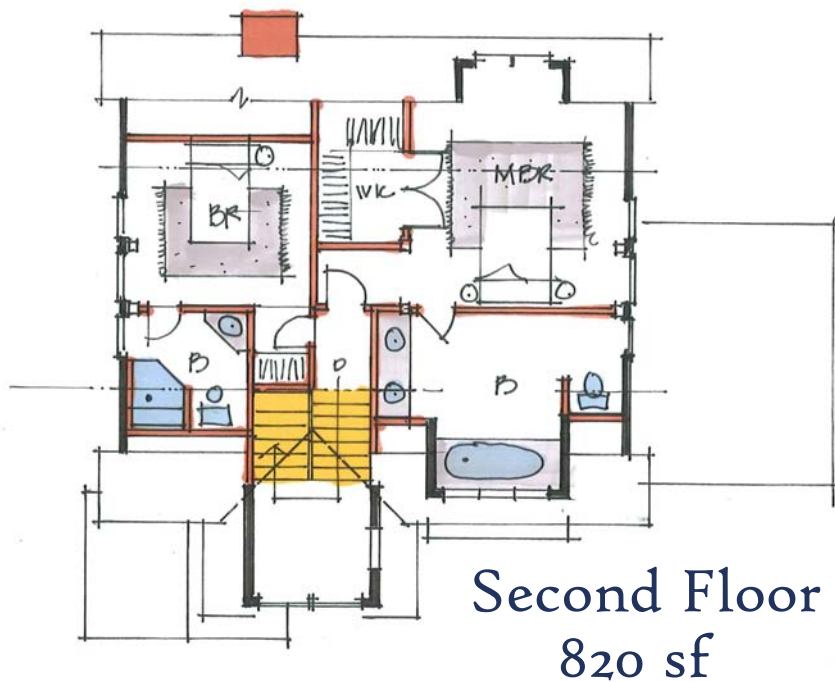
1,740 square feet  
(2,740 with basement)  
3 bedrooms  
3.5 bathrooms



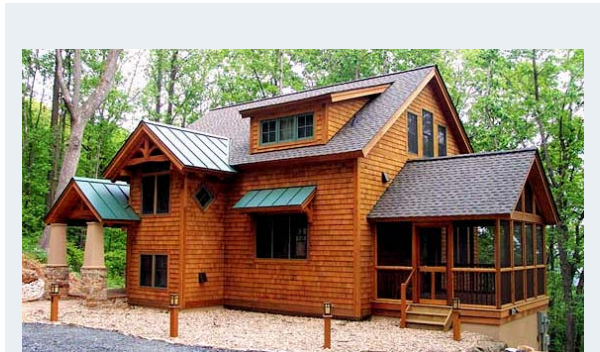
Basement  
1,000 sf



First Floor  
920 sf



Second Floor  
820 sf



## Package Includes:

Full Douglas Fir Frame  
2x8 T&G floor decking

6 1/2" EPS Wall  
SIPs R-23

1x8 T&G roof decking

5" Rigid Foam Roof  
Insulation R-33

Lifetime Architectural  
Grade Roof Shingles

Standard cedar siding and trim

Andersen® 400 series windows

Click to See Photos  
of This Project

800.636.2424



info@timberpeg.com



**TIMBERPEG®**  
The Artisans of Post & Beam.