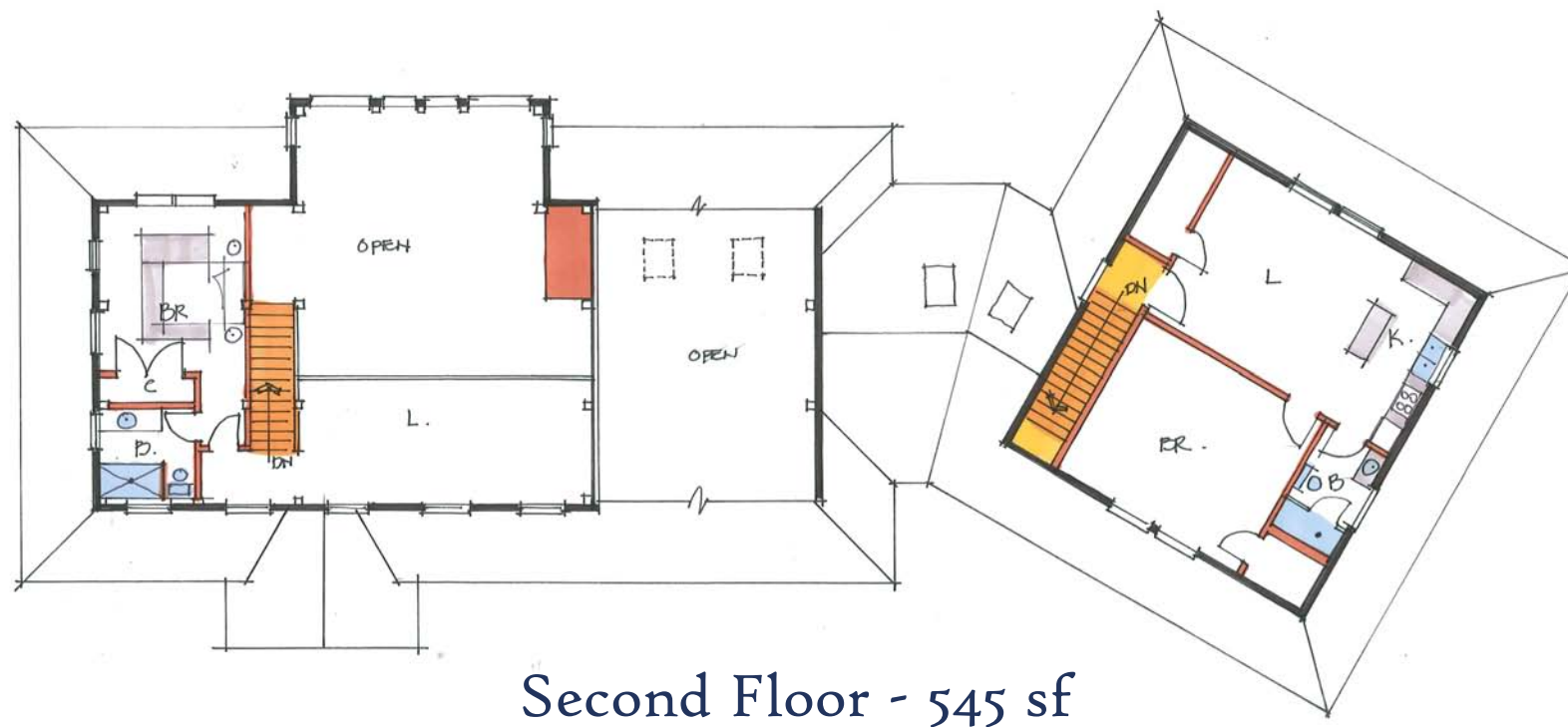
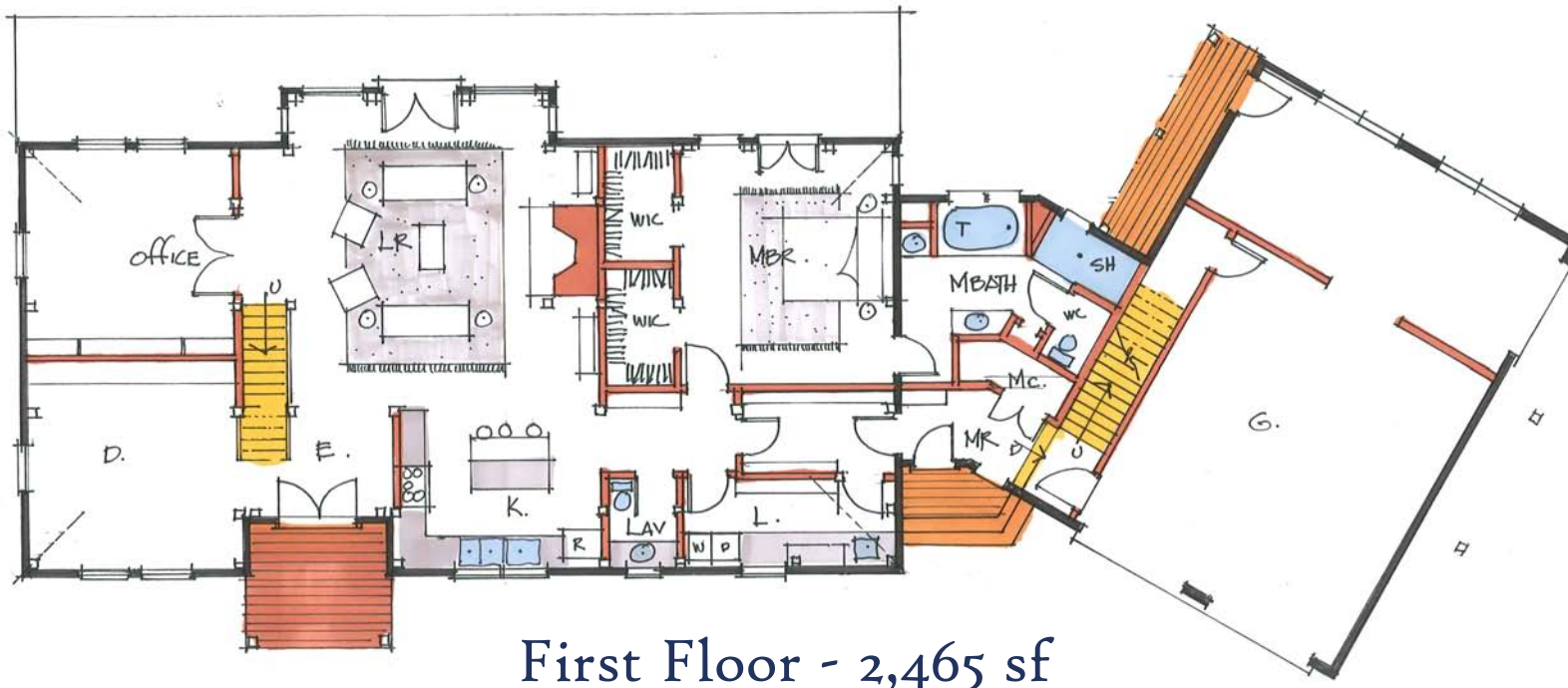


The Fiddle Creek

Click to Request
More Info About
This Plan

3,010 square feet
3 bedrooms
3.5 bathrooms



Package Price Includes:

Full Douglas Fir Frame
2x8 T&G floor decking

6 1/2" EPS Wall
SIPs R-23

1x8 T&G roof decking

5" Rigid Foam Roof
Insulation R-33

Lifetime Architectural
Grade Roof Shingles

Standard cedar siding and trim

Andersen® 400 series windows

Click to See Photos
of This Project

800.636.2424

◆ info@timberpeg.com



TIMBERPEG®
The Artisans of Post & Beam.